

GENERAL NOTES:

1. PLAN HAS BEEN PREPARED TO DETAIL THE LOCATION OF EXISTING RESOURCE AREAS WITHIN THE RAILROAD EASEMENT IN TOWNSEND.
2. WETLAND FLAGS LOCATED BY DUCHARME & DILLIS CIVIL DESIGN GROUP INC. IN DECEMBER OF 2018.
3. PROPERTY LINE INFORMATION SHOWN ON THIS PLAN IS SHOWN BASED UPON THE MASSACHUSETTS GEOGRAPHIC INFORMATION SYSTEM. PROPERTY LINES ARE APPROXIMATE ONLY.
4. WETLAND RESOURCE AREAS ON THE SITE WERE FIELD DELINEATED BY DUCHARME & DILLIS CIVIL DESIGN GROUP, INC.

PREPARED BY:

DUCHARME & DILLIS
Civil Design Group, Inc.
CIVIL ENGINEERS • LAND SURVEYORS • WETLAND CONSULTANTS

1092 MAIN STREET, P.O. BOX 428
BOLTON, MASSACHUSETTS 01740

PHONE: (978) 779-6091 FAX: (978) 779-0260
www.DucharmeandDillis.com

OWNER:

APPLICANT:
SQUANNACOOK GREENWAYS

SCALE:

COPYRIGHT DUCHARME & DILLIS CIVIL DESIGN GROUP, INC 2014

DATE: 1/21/18

DESIGN BY:

DRAWN BY: PJP

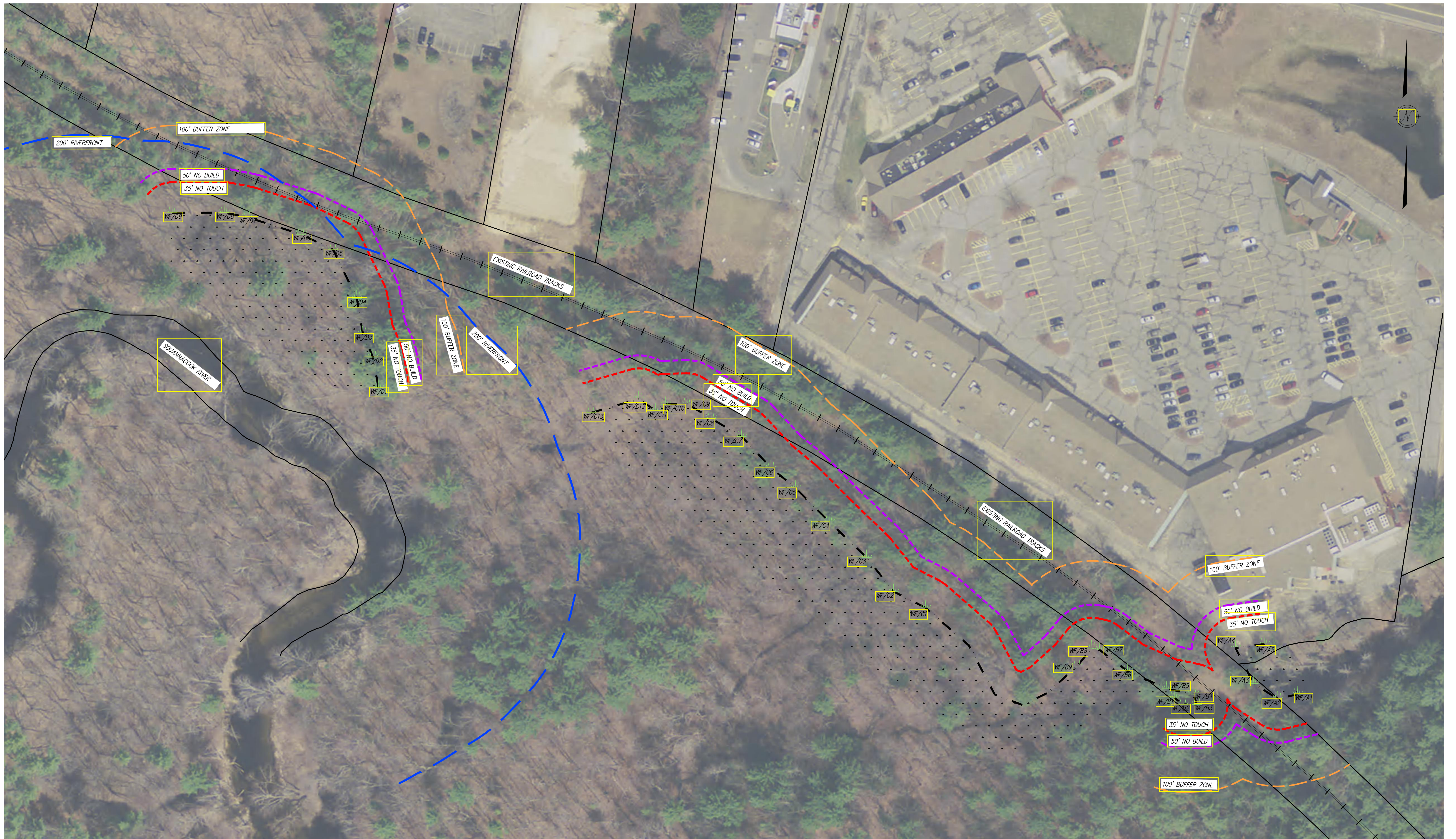
CHECKED BY: SRD


WETLAND RESOURCE AREA PLAN SQUANNACOOK GREENWAYS TOWNSEND, MA			
NO.	DATE	DESCRIPTION	BY

JOB NO. 6056

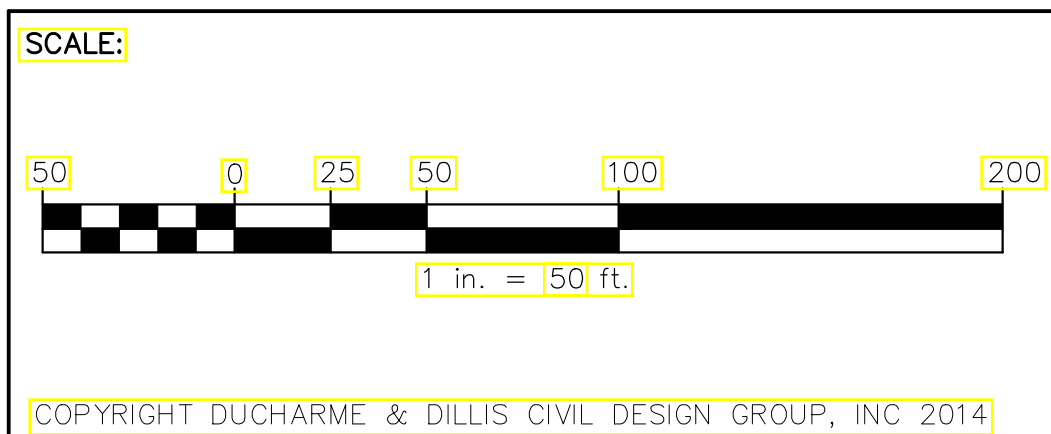
DRAWING NO. 6056

SHEET NO. 1 OF 10



PREPARED BY:

DUCHARME & DILLIS
 Civil Design Group, Inc.
 CIVIL ENGINEERS • LAND SURVEYORS • WETLAND CONSULTANTS
 1092 MAIN STREET, P.O. BOX 428
 BOLTON, MASSACHUSETTS 01740
 PHONE: (978) 779-6091 FAX: (978) 779-0260
 www.DucharmeandDillis.com

OWNER:
 APPLICANT:
SQUANNACOOK GREENWAYS

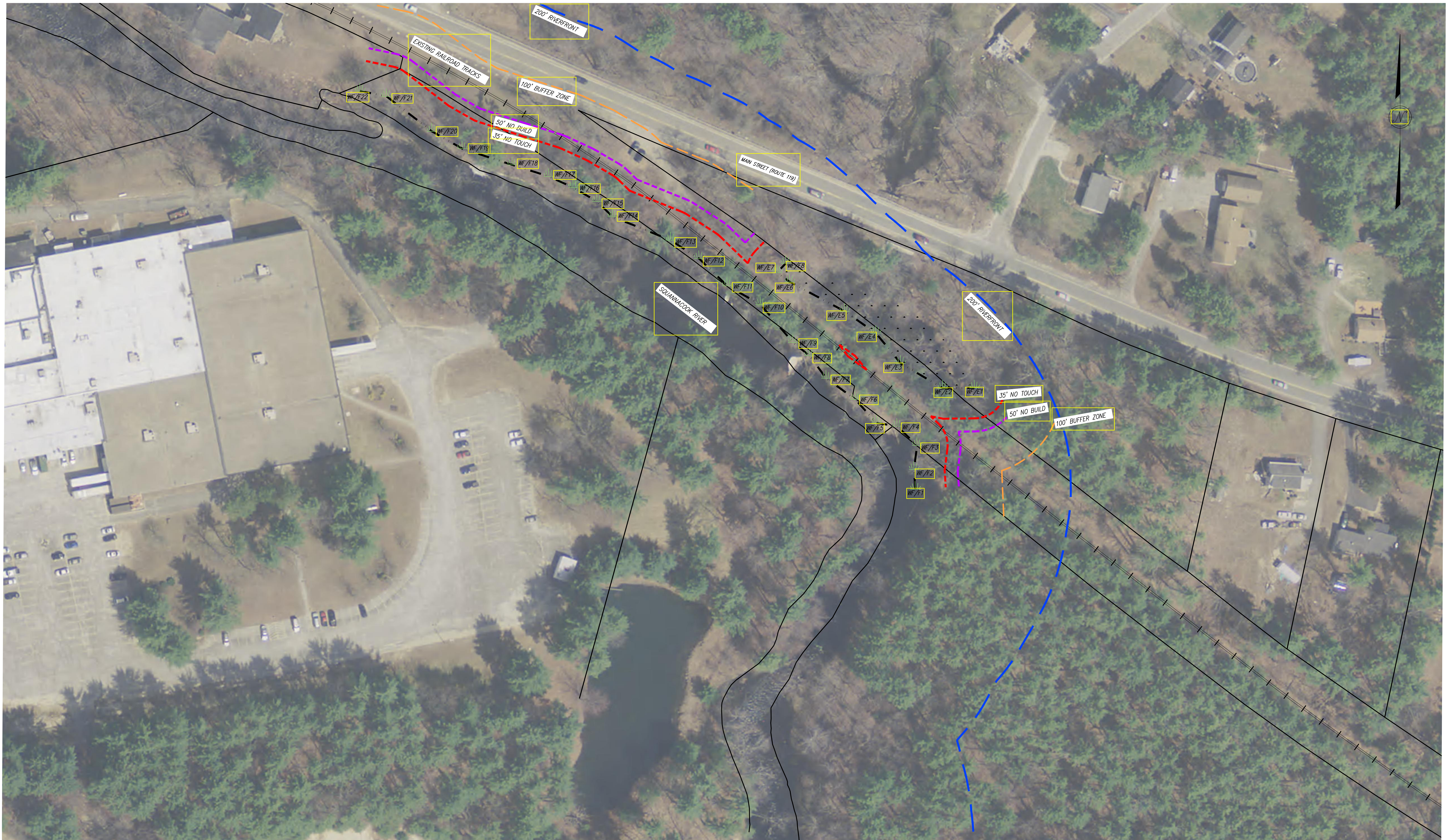


DATE: 1/21/18
 DESIGN BY:
 DRAWN BY: PJP
 CHECKED BY: SRD

WETLAND RESOURCE AREA PLAN
SQUANNACOOK GREENWAYS
 TOWNSEND, MA

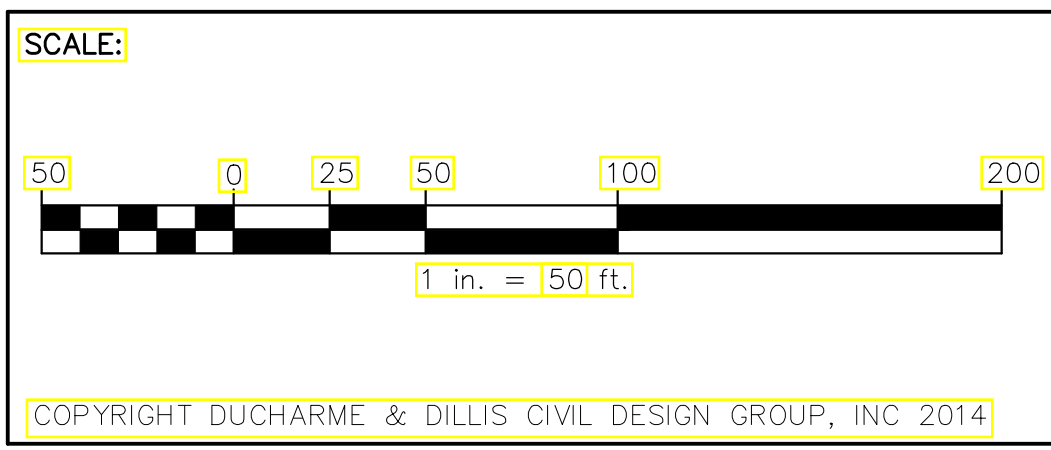
NO.	DATE	DESCRIPTION	BY

JOB NO. 6056
 DRAWING NO. 6056
 SHEET NO. **2**
 OF 10



PREPARED BY:
DUCHARME & DILLIS
 Civil Design Group, Inc.
 CIVIL ENGINEERS • LAND SURVEYORS • WETLAND CONSULTANTS
 1092 MAIN STREET, P.O. BOX 428 BOLTON, MASSACHUSETTS 01740
 PHONE: (978) 779-6091 FAX: (978) 779-0260
 www.DucharmeandDillis.com

OWNER:
 APPLICANT:
SQUANNACOOK GREENWAYS



--	--	--	--

DATE: 1/21/18
 DESIGN BY:
 DRAWN BY: PJP
 CHECKED BY: SRD

WETLAND RESOURCE AREA PLAN
SQUANNACOOK GREENWAYS
 TOWNSEND, MA

NO.	DATE	DESCRIPTION	BY

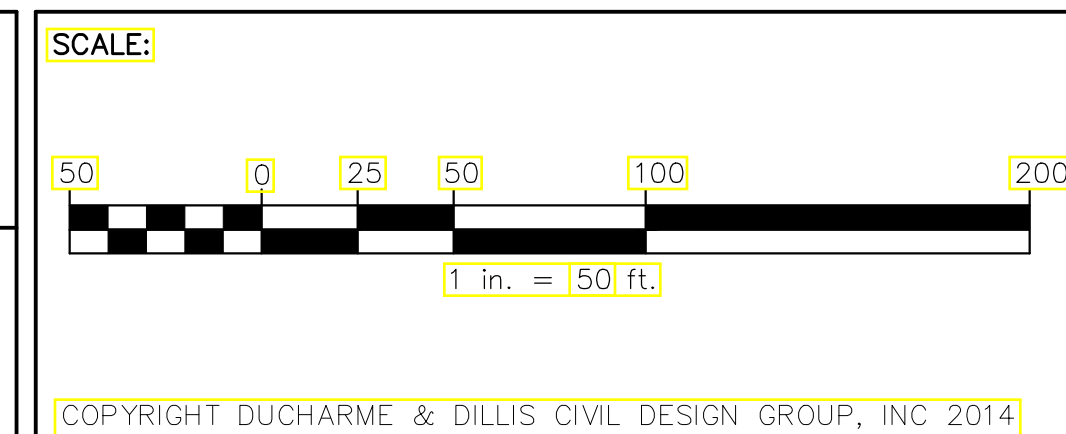
JOB NO. 6056
 DRAWING NO. 6056
 SHEET NO. **3**
 OF 10



PREPARED BY:

DUCHARME & DILLIS
 Civil Design Group, Inc.
 CIVIL ENGINEERS • LAND SURVEYORS • WETLAND CONSULTANTS
 1092 MAIN STREET, P.O. BOX 428
 BOLTON, MASSACHUSETTS 01740
 PHONE: (978) 779-6091 FAX: (978) 779-0260
www.DucharmeandDillis.com

OWNER:
 APPLICANT:
SQUANNACOOK GREENWAYS



--	--	--	--

DATE: 1/21/18
 DESIGN BY:
 DRAWN BY: PJP
 CHECKED BY: SRD

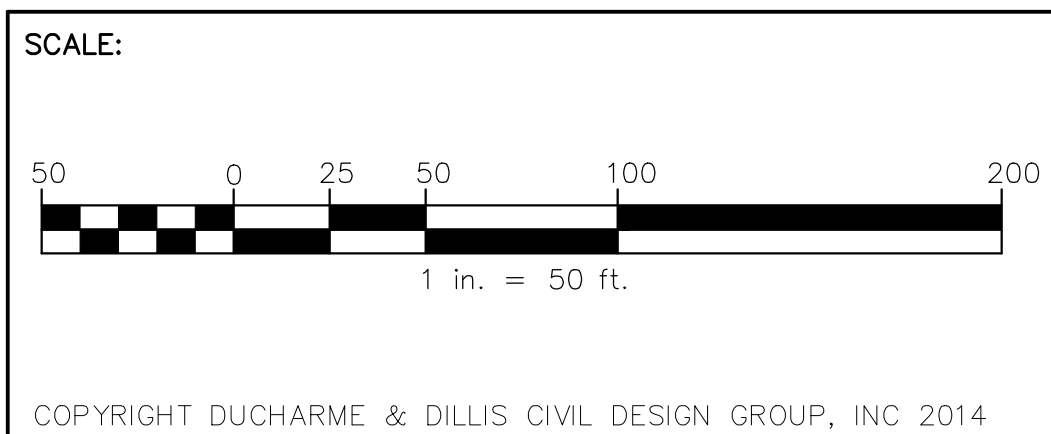
WETLAND RESOURCE AREA PLAN SQUANNACOOK GREENWAYS TOWNSEND, MA			
NO.	DATE	DESCRIPTION	BY

JOB NO. 6056
 DRAWING NO. 6056
 SHEET NO. **4**
 OF 10



PREPARED BY:
DUCHARME & DILLIS
 Civil Design Group, Inc.
 CIVIL ENGINEERS • LAND SURVEYORS • WETLAND CONSULTANTS
 1092 MAIN STREET, P.O. BOX 428 BOLTON, MASSACHUSETTS 01740
 PHONE: (978) 779-6091 FAX: (978) 779-0260
 www.DucharmeandDillis.com

OWNER:
 APPLICANT:
 SQUANNACOOK GREENWAYS



--	--	--	--


DATE: 1/21/18
 DESIGN BY:
 DRAWN BY: PJP
 CHECKED BY: SRD

WETLAND RESOURCE AREA PLAN
 SQUANNACOOK GREENWAYS
 TOWNSEND, MA

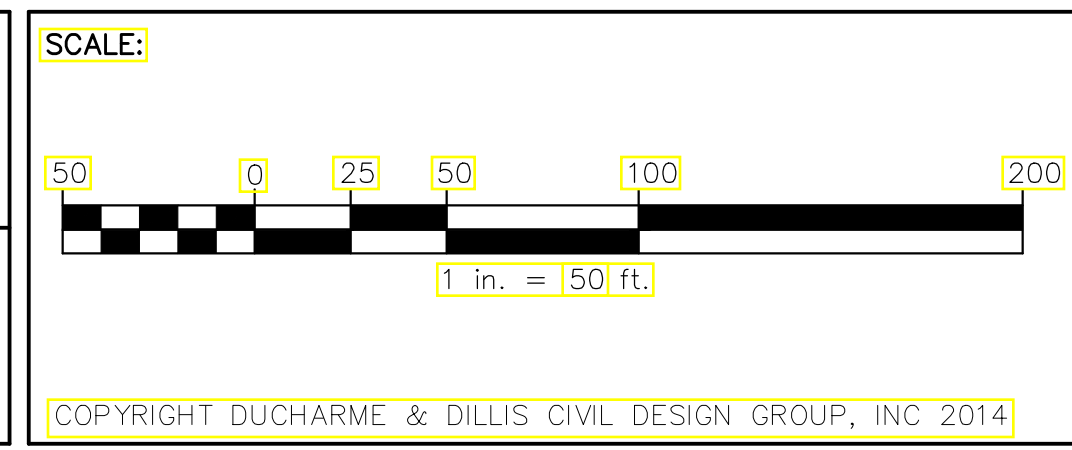
NO.	DATE	DESCRIPTION	BY

JOB NO. 6056
 DRAWING NO. 6056
 SHEET NO. **5**
 OF 10



PREPARED BY:

DUCHARME & DILLIS
 Civil Design Group, Inc.
 CIVIL ENGINEERS • LAND SURVEYORS • WETLAND CONSULTANTS
 1092 MAIN STREET, P.O. BOX 428 BOLTON, MASSACHUSETTS 01740
 PHONE: (978) 779-6091 FAX: (978) 779-0260
www.DucharmeandDillis.com

OWNER:
 APPLICANT:
SQUANNACOOK GREENWAYS



--	--	--	--

DATE: 1/21/18
 DESIGN BY:
 DRAWN BY: PJP
 CHECKED BY: SRD

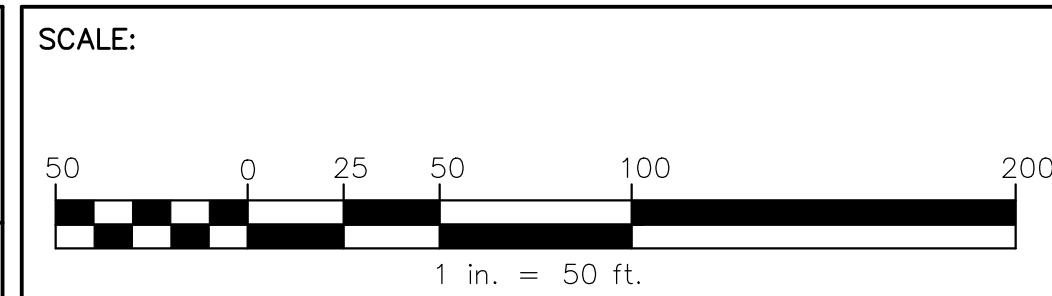
WETLAND RESOURCE AREA PLAN SQUANNACOOK GREENWAYS TOWNSEND, MA			
NO.	DATE	DESCRIPTION	BY

JOB NO. 6056
 DRAWING NO. 6056
 SHEET NO. **6**
 OF 10



PREPARED BY:
DUCHARME & DILLIS
 Civil Design Group, Inc.
 CIVIL ENGINEERS • LAND SURVEYORS • WETLAND CONSULTANTS
 1092 MAIN STREET, P.O. BOX 428 BOLTON, MASSACHUSETTS 01740
 PHONE: (978) 779-6091 FAX: (978) 779-0260
 www.DucharmeandDillis.com

OWNER:
 APPLICANT:
 SQUANNAHOOK GREENWAYS



COPYRIGHT DUCHARME & DILLIS CIVIL DESIGN GROUP, INC 2014

DATE: 1/21/18
 DESIGN BY:
 DRAWN BY: PJP
 CHECKED BY: SRD

WETLAND RESOURCE AREA PLAN
 SQUANNAHOOK GREENWAYS
 TOWNSEND, MA

NO.	DATE	DESCRIPTION	BY

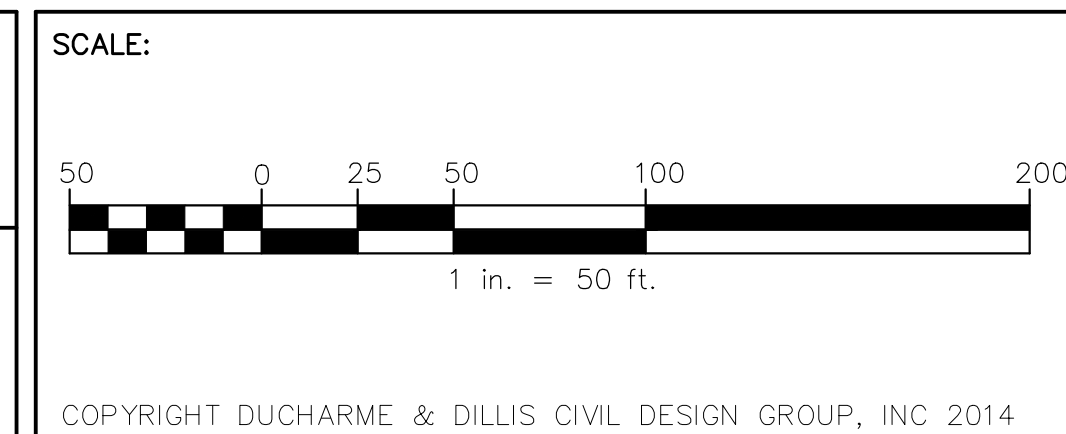
JOB NO. 6056
 DRAWING NO. 6056
 SHEET NO. **7**
 OF 10



PREPARED BY:

DUCHARME & DILLIS
 Civil Design Group, Inc.
 CIVIL ENGINEERS • LAND SURVEYORS • WETLAND CONSULTANTS
 1092 MAIN STREET, P.O. BOX 428 BOLTON, MASSACHUSETTS 01740
 PHONE: (978) 779-6091 FAX: (978) 779-0260
 www.DucharmeandDillis.com

OWNER:
 APPLICANT:
 SQUANACOOK GREENWAYS

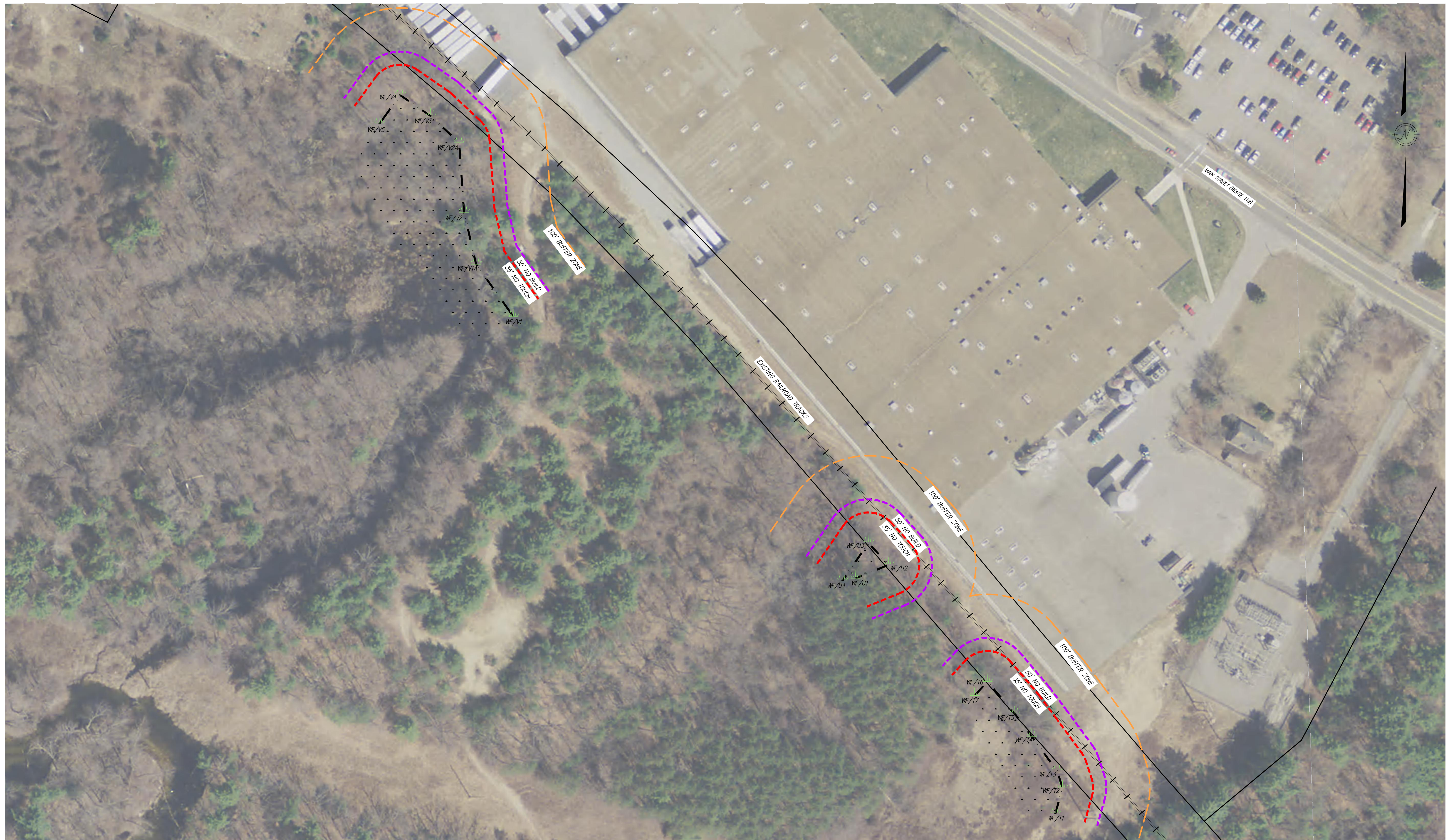


--	--	--	--

DATE: 1/21/18
 DESIGN BY:
 DRAWN BY: PJP
 CHECKED BY: SRD

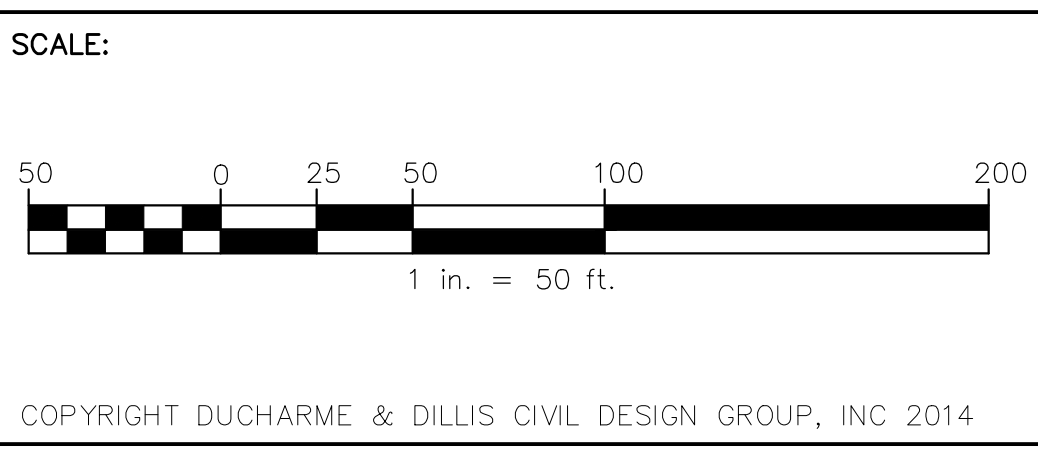
WETLAND RESOURCE AREA PLAN SQUANACOOK GREENWAYS TOWNSEND, MA			
NO.	DATE	DESCRIPTION	BY

JOB NO. 6056
 DRAWING NO. 6056
 SHEET NO. **8**
 OF 10



PREPARED BY:
DUCHARME & DILLIS
 Civil Design Group, Inc.
 CIVIL ENGINEERS • LAND SURVEYORS • WETLAND CONSULTANTS
 1092 MAIN STREET, P.O. BOX 428 BOLTON, MASSACHUSETTS 01740
 PHONE: (978) 779-6091 FAX: (978) 779-0260
 www.DucharmeandDillis.com

OWNER:
 APPLICANT:
 SQUANNACOOK GREENWAYS



--	--	--	--

DATE: 1/21/18
 DESIGN BY:
 DRAWN BY: PJP
 CHECKED BY: SRD

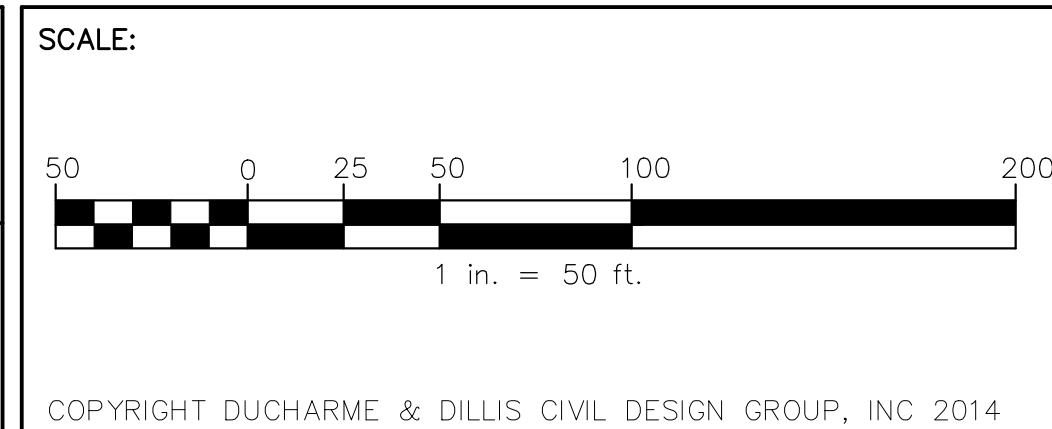
WETLAND RESOURCE AREA PLAN SQUANNACOOK GREENWAYS TOWNSEND, MA			
NO.	DATE	DESCRIPTION	BY

JOB NO. 6056
 DRAWING NO. 6056
 SHEET NO. **9**
 OF 10



PREPARED BY:
DUCHARME & DILLIS
 Civil Design Group, Inc.
 CIVIL ENGINEERS • LAND SURVEYORS • WETLAND CONSULTANTS
 1092 MAIN STREET, P.O. BOX 428 BOLTON, MASSACHUSETTS 01740
 PHONE: (978) 779-6091 FAX: (978) 779-0260
 www.DucharmeandDillis.com

OWNER:
 APPLICANT:
 SQUANNACOOK GREENWAYS



--	--	--

DATE: 1/21/18
 DESIGN BY:
 DRAWN BY: PJP
 CHECKED BY: SRD

WETLAND RESOURCE AREA PLAN SQUANNACOOK GREENWAYS TOWNSEND, MA			
NO.	DATE	DESCRIPTION	BY

JOB NO. 6056
 DRAWING NO. 6056
 SHEET NO. **10**
 OF 10